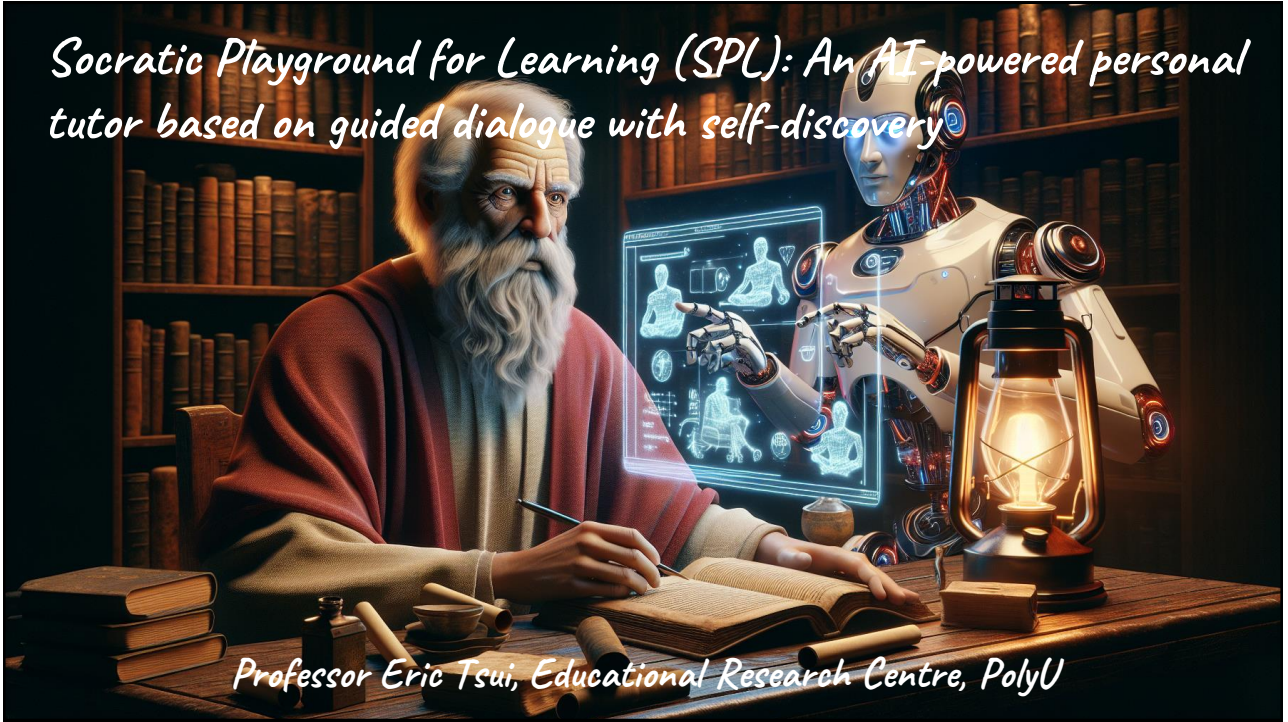


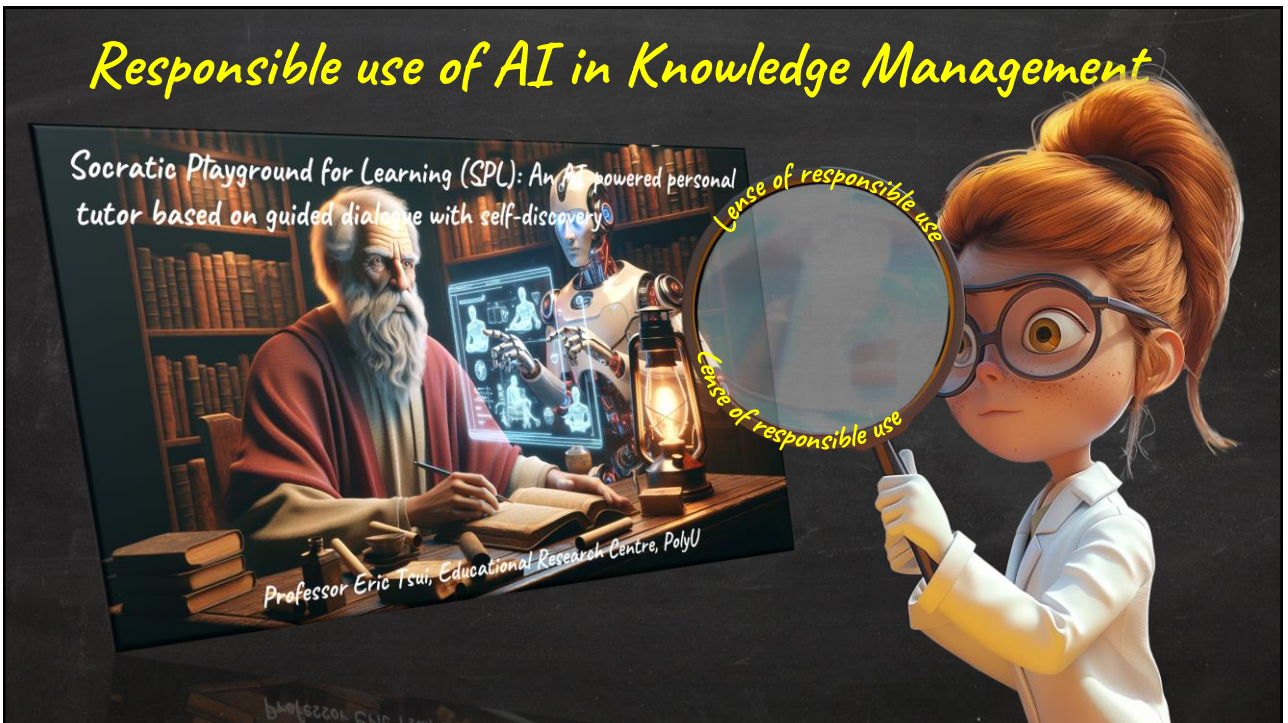
Socratic Playground for Learning (SPL): An AI-powered personal tutor based on guided dialogue with self-discovery



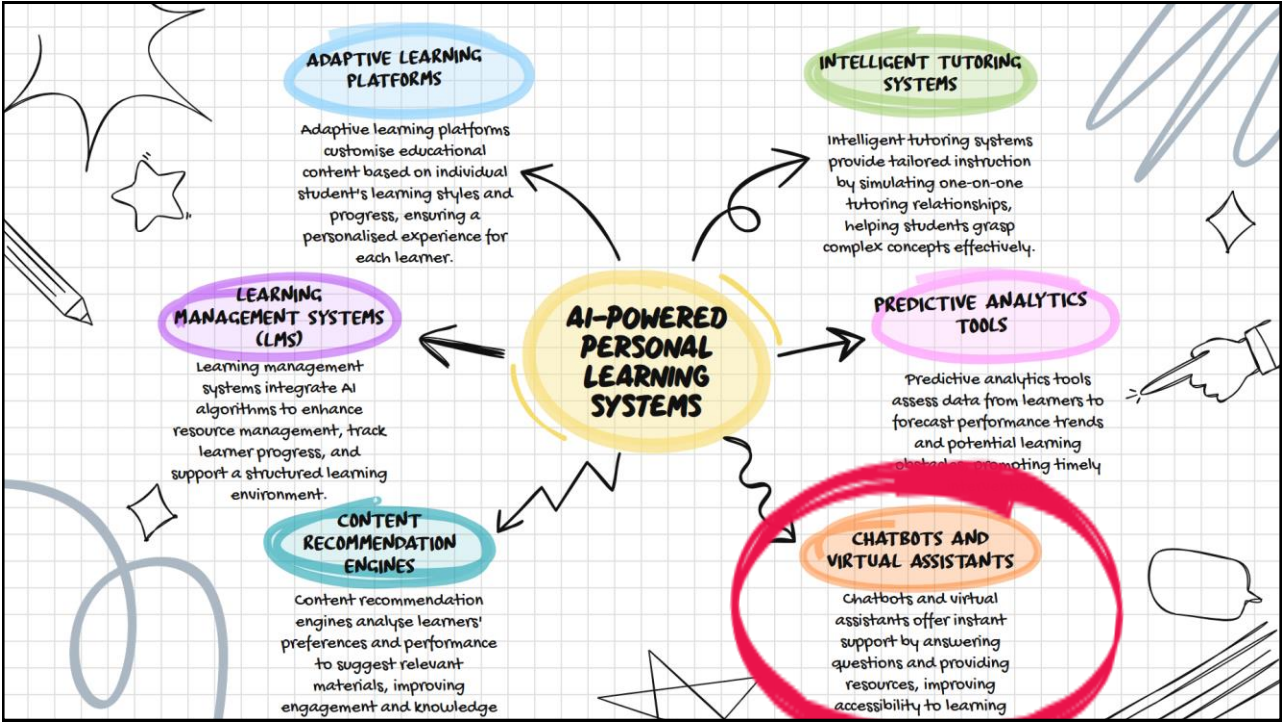
Professor Eric Tsui, Educational Research Centre, PolyU

188

Responsible use of AI in Knowledge Management



189



190

AI cheating is on the rise
AI cheating is on the rise in universities, according to a recent investigation by The Guardian.
BY EDSCOOP STAFF • JUNE 16, 2025
Listen to this article 1:14 Learn more.

The worst of all fears!!!

University students offload critical thinking, other hard work to AI
Two studies indicate students are using chatbots in a way that undermines what they learn

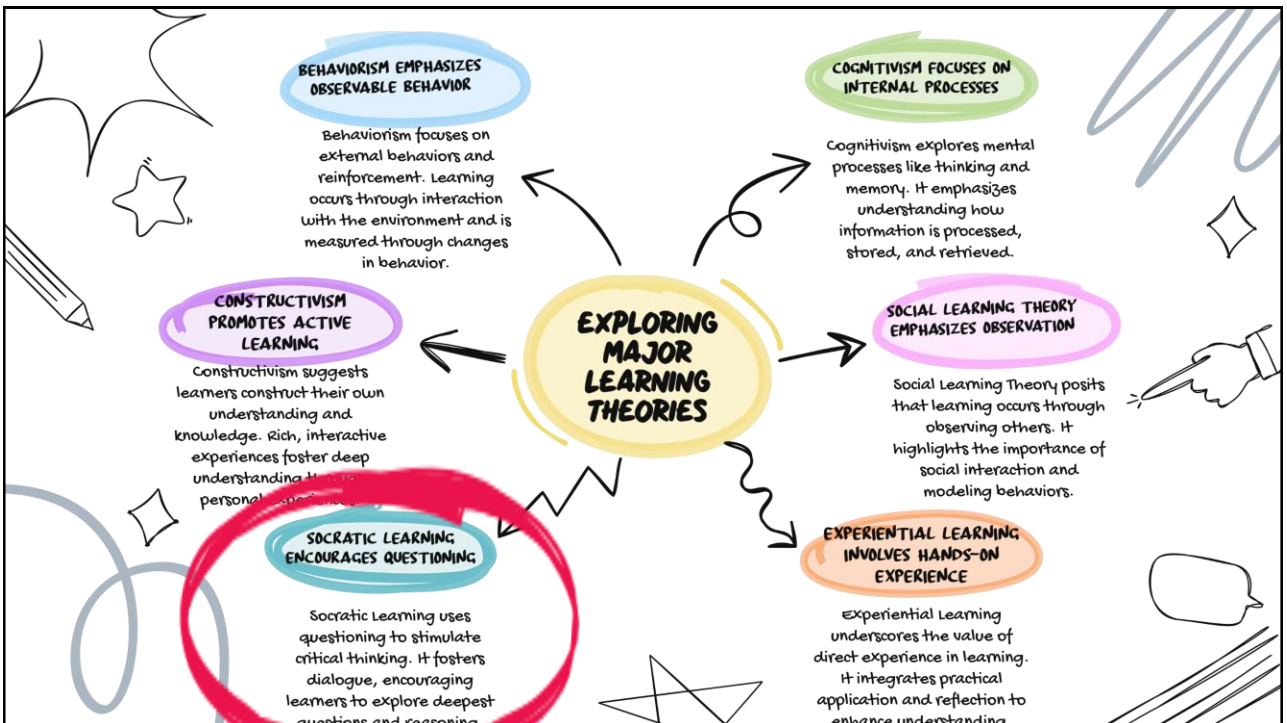
by JILL BARSHAY May 19, 2025

191

Your Brain on ChatGPT: Accumulation of Cognitive Debt when Using an AI Assistant for Essay Writing Task

[Main](#)
[Preprint](#)
[Video](#)
[FAQ](#)
[Figures](#)
[Contact](#)

192



194

Understanding Scaffolding in Education

Scaffolding aids student learning through structured support and gradual independence.

Supportive Guidance

Teachers provide various support measures, such as hints and models, to facilitate learning.

Encourages Active Participation

Students engage actively with material, promoting hands-on learning and critical thinking.

Tailored to Learner Needs

Scaffolding is flexible and adapts to accommodate each student's unique learning level.



Promotes Collaboration

Peer interactions and group work enhance understanding through shared insights and experiences.

Gradual Release of Responsibility

Instruction shifts from teacher-led to student-led as confidence and skills develop over time.

Emphasizes Feedback

Regular feedback helps identify areas for improvement and adjusts support accordingly.

195

ChatGPT's Study & Claude's Learning mode

A personal study assistant that promotes deep understanding rather than quick answers

Key Features:

- *Socratic questioning & hints: Encourages critical thinking by guiding students through problems step-by-step*
- *Scaffolded responses: Breaks down complex topics into digestible parts with clear connections*
- *Personalised support: Adapts to the user's skill level and prior interactions*
- *Knowledge checks: Includes quizzes and open-ended questions to reinforce learning*
- *Built with educators: Designed in collaboration with teachers and learning scientists to reflect best practices in pedagogy*

196

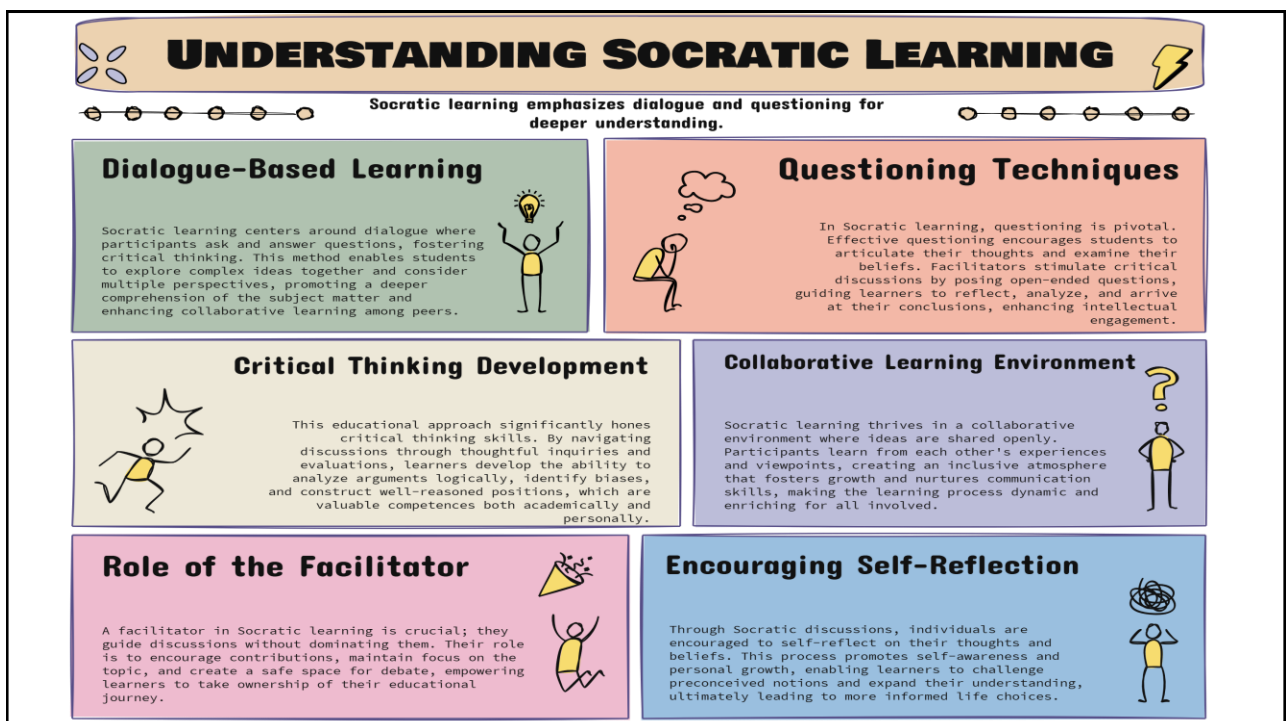
What is the Socratic Learning?

Socratic Learning is a method of learning inspired by the Socratic Method, which involves asking and answering questions to stimulate critical thinking and illuminate ideas. In educational contexts, Socratic Learning encourages learners to:

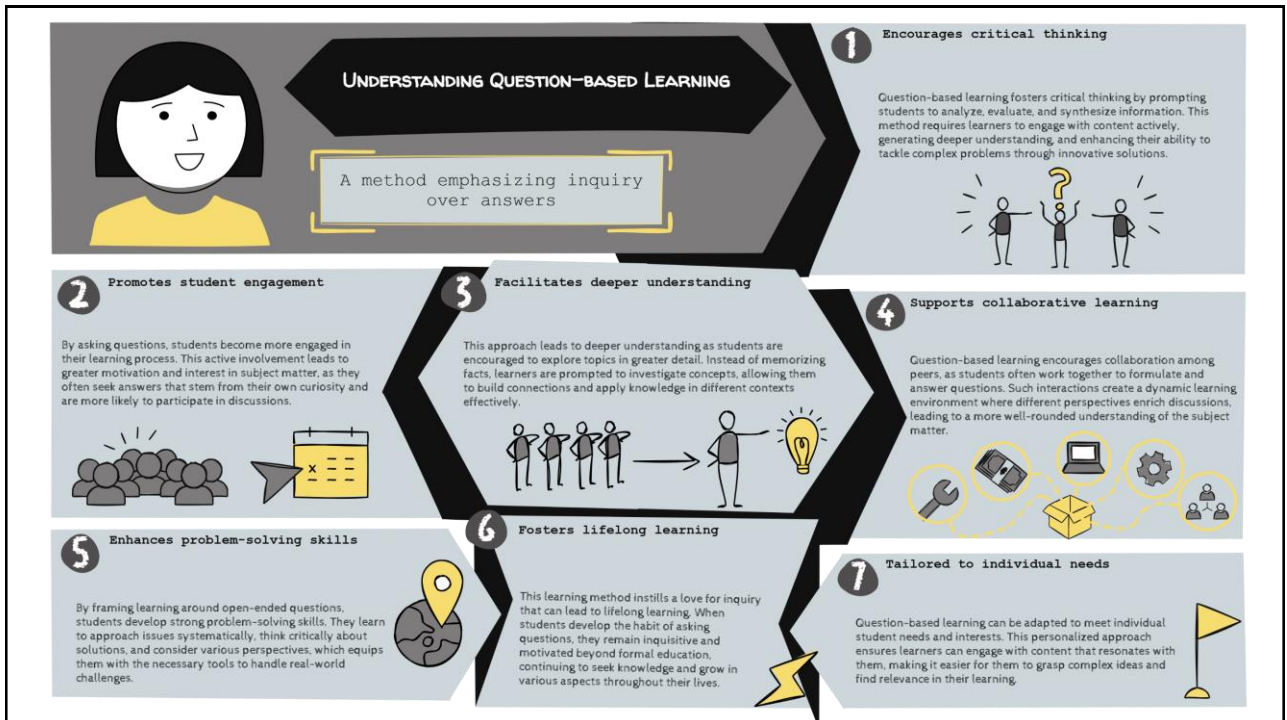
- Reflect deeply on concepts
- Challenge assumptions
- Explore multiple perspectives
- Construct knowledge through dialogue

It's less about delivering answers and more about guiding learners to discover insights themselves

198



199



200

Benefits of Socratic Learning

1. Promotes metacognition – Learners become aware of how they think and learn
2. Encourages active engagement – Learners take ownership of their learning
3. Improves retention and understanding – Deep questioning leads to meaningful connections
4. Fosters independence – Learners develop the ability to self-question and self-correct

202



203

Applying G-AI to Personal Learning

1. Recommendation of learning objective(s), learning path with personalisation
2. Adaptation to various learning environments and learning methods
3. Content authoring
4. Provide guidance, explanation and feedback in real time
5. Conduct assessments for the learner
6. Support self-paced learning, user-chunking of learning content
7. Track and report progress and performance

205

What is the Socratic Playground for Learning (SPL)



- Supports a conversational dialog with the user
- Proposes a set of topics to cover for teaching a specified concept
- Generates sub-topics, concepts & display their inter-relationships
- Generates learning content for the chosen topic(s)
- Recommends various pedagogies to deliver the teaching and learning of the chosen topic(s) based on a user-specified learning environment
- Adapts the output for different levels/types of learners
- Bookmark ("learning nugget") management
- A ChatGPT-4 powered tool

206

The Socratic Playground for Learning (SPL) interface

- Language Options
- Academic Discipline
 - Sub-discipline
- Learning Aim *(What to learn about the Sub-domain?)*
- Learning Context *(What aspect to learn in order to fulfill the objective?)*
- Learner/Participant *(Stereotype)*



Learning Surroundings Online Discussions Virtual Workshops Case Study Analysis Webinars with Experts Knowledge Sharing Sessions Collaborative Projects Peer Learning Groups Interactive eLearning Modules Mentorship Programs Reflective Journals Virtual Reality Simulations Workplace Knowledge Fairs

- Target Concept/Skill *(Specify the concept you wish to learn)*

Teaching Methodology Test your understanding: Assessing your understanding by Generative AI. Self-reflection: You need to answer tough questions. Discussion: OpenAI organizes a team to help you Socratic Method Asking Questions Concept Inventory Game: JEPARDY Game: Who wants to be Millionaire Game: TriBond game Teachable Agent: OpenAI needs your help to understand the concepts

207

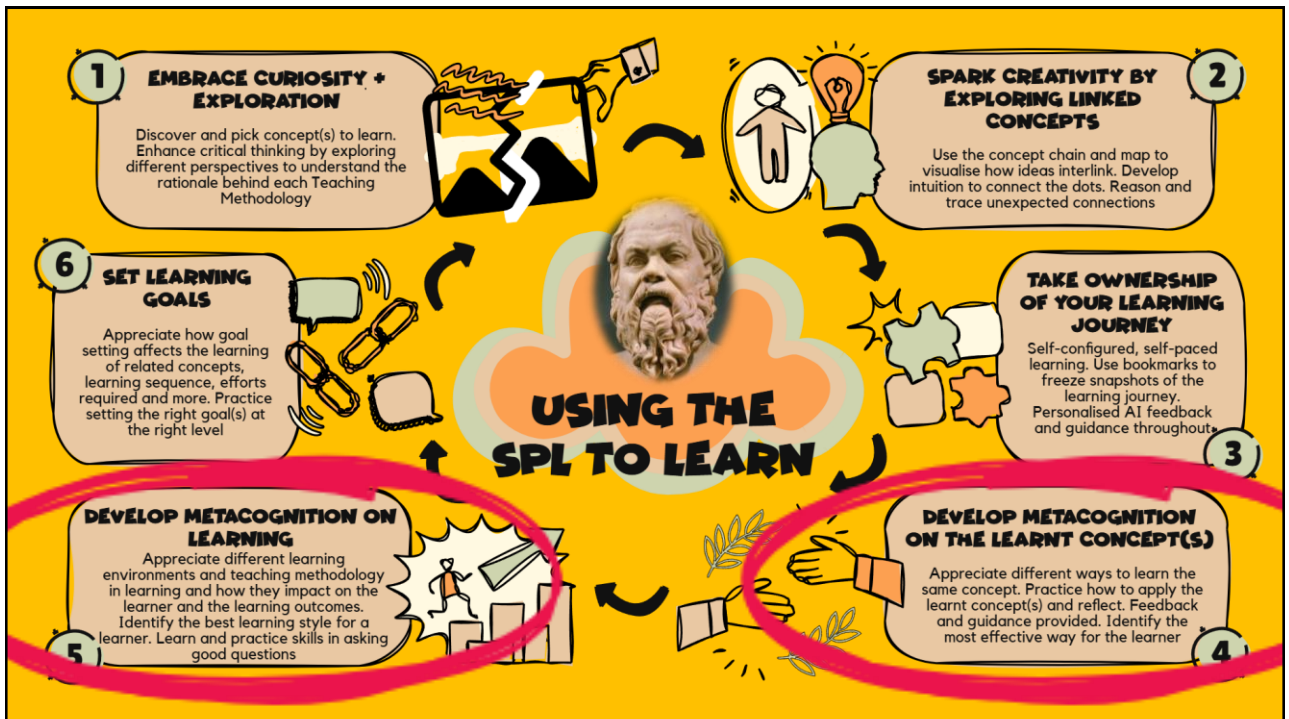
Demonstration of the SPL

exp.skoonline.org

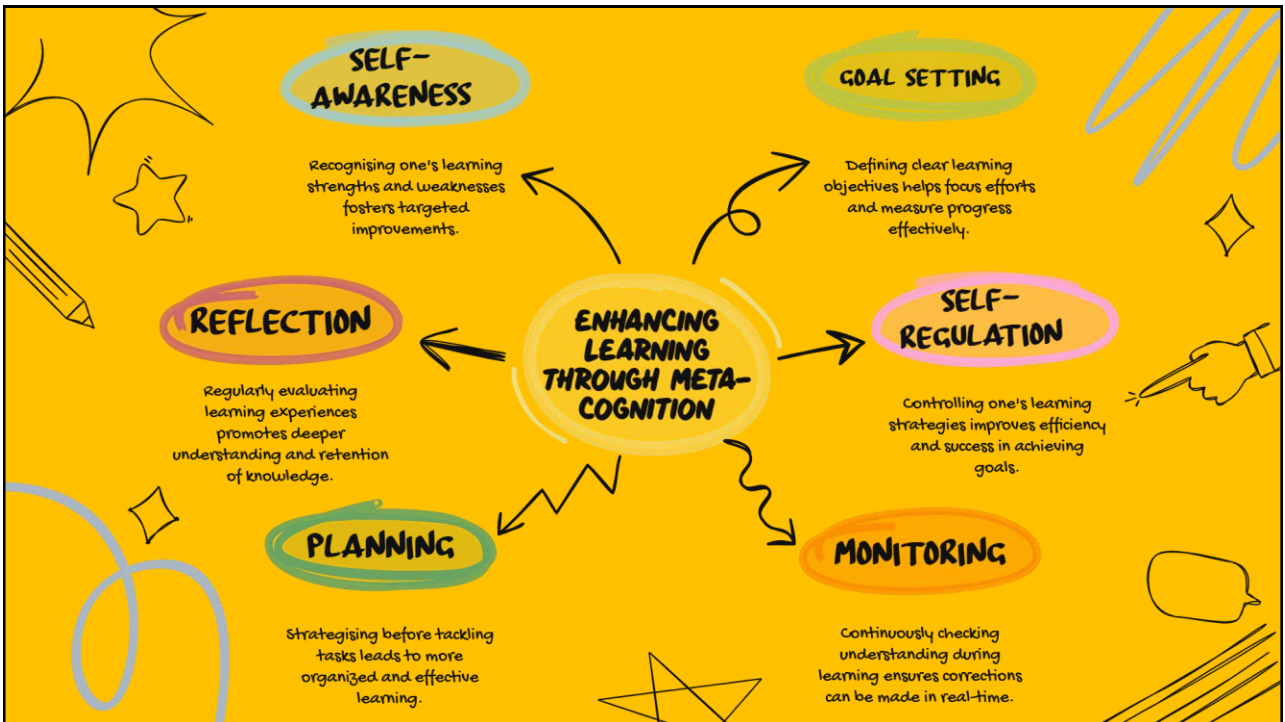
What is SPL? Try it in English Try it in your own language

Most Recent Explored Concepts				
Domain	Subdomain	Concept	Pedagogy	Explore
Education	Learning Theories	Connectivism	SOCRATIC	<input type="button" value="Try it out"/>
Education	Learning Theories	Social Learning	SOCRATIC	<input type="button" value="Try it out"/>
Education	Learning Theories	Social Learning	SOCRATIC	<input type="button" value="Try it out"/>
Education	Learning Theories	Experiential Learning	SOCRATIC	<input type="button" value="Try it out"/>

215



220

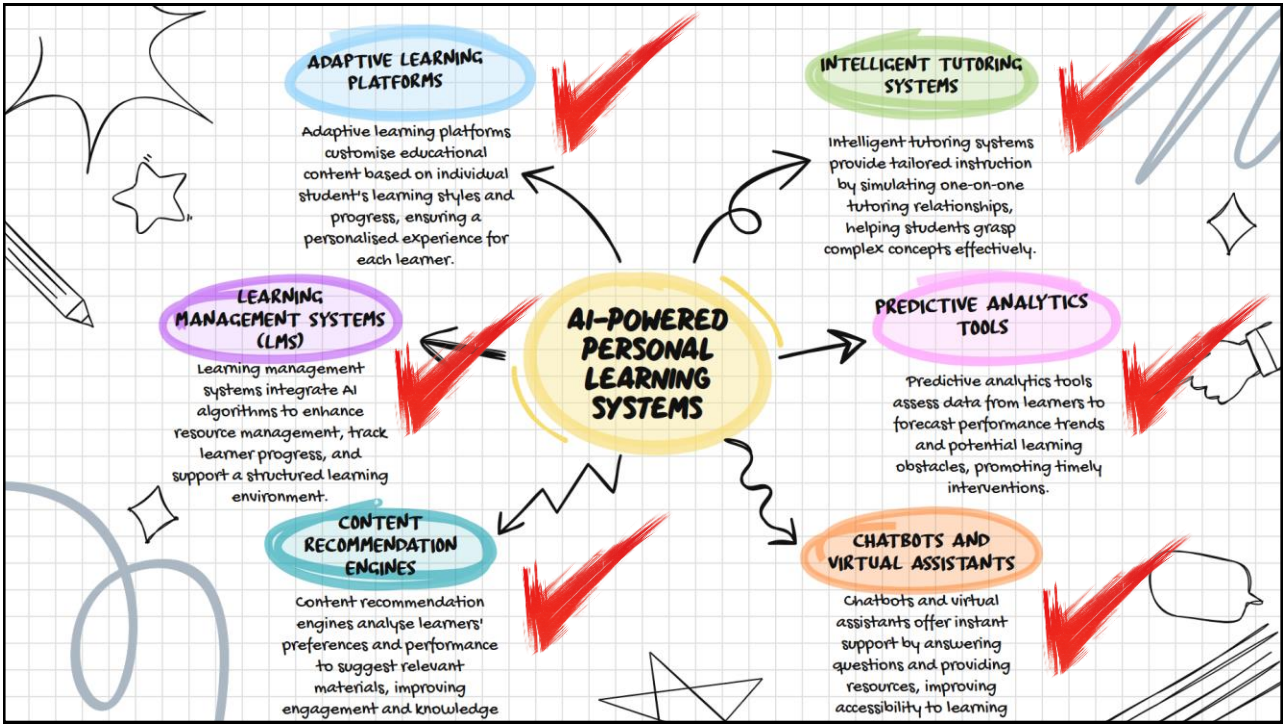


221

Benefits of Socratic Learning

1. Promotes metacognition – Learners become aware of how they think and learn
2. Encourages active engagement – Learners take ownership of their learning
3. Improves retention and understanding – Deep questioning leads to meaningful connections
4. Fosters independence – Learners develop the ability to self-question and self-correct

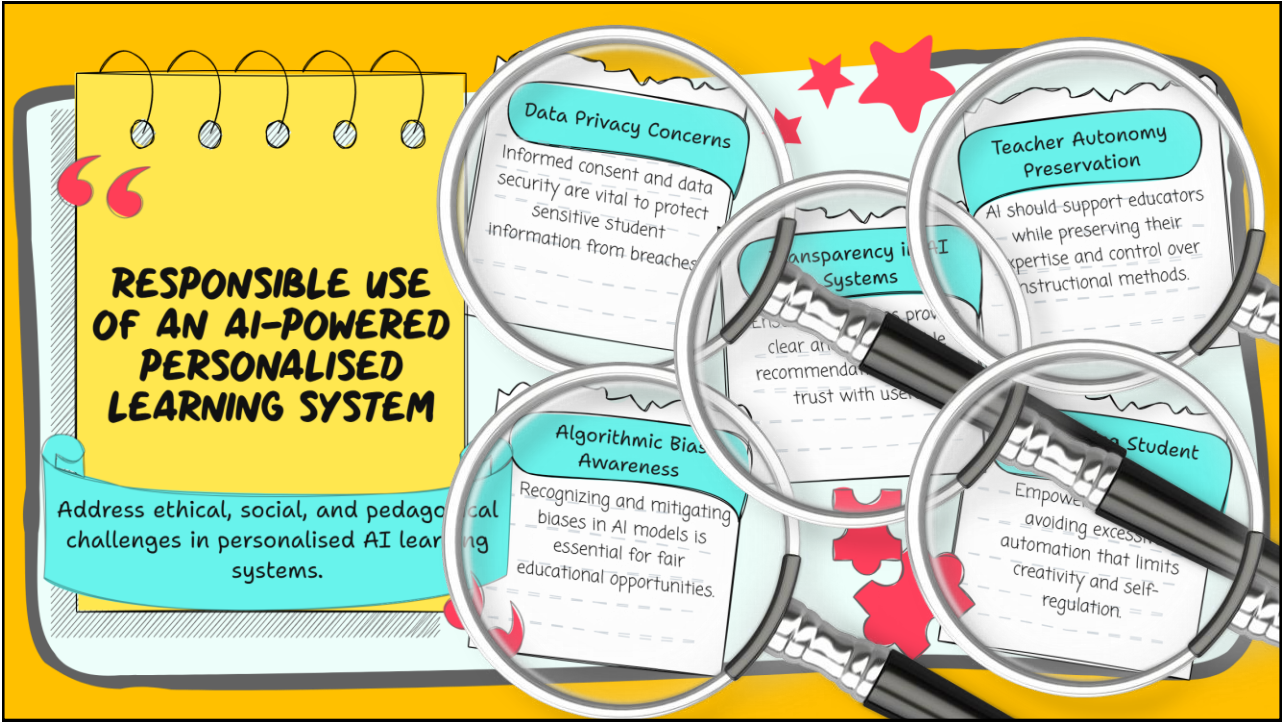
222



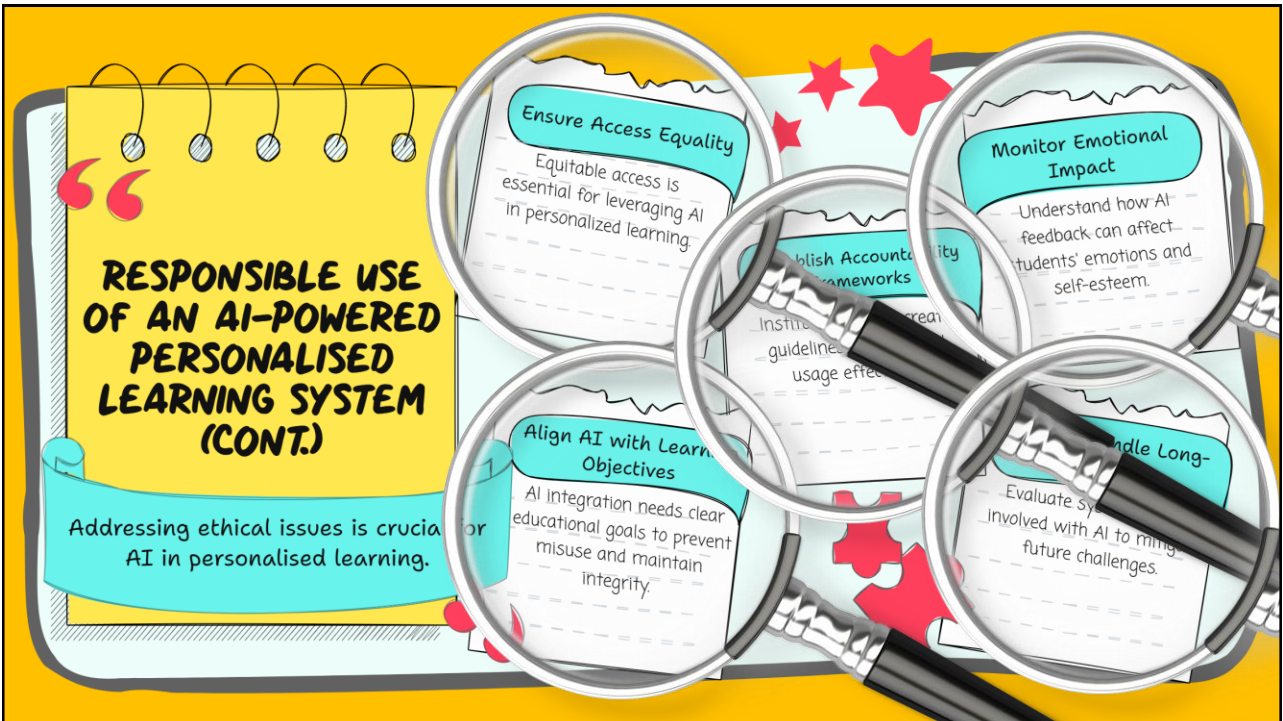
223



225



226



227

Defining Knowledge in the Age of Society 5.0

Introducing **Responsible Knowledge Management (rKM)** and its usefulness for implementing ethically accepted AI solutions in organisations.

RESPONSIBLE AI

HUMAN-CENTRED AI

KNOWLEDGE MANAGEMENT

SOCIETY 5.0

Susanne Durst — Bangkok University / Reykjavik University

Durst, S. (2026). Defining knowledge in the age of Society 5.0. *Swiss Journal of Business*, 80(1), 83–88. <https://doi.org/10.5771/2944-3741-2026-1-83>



228



229

Dimension	Issues	Opportunities	Challenges
Curriculum Design	Rigid, standardised curricula that do not accommodate individual learning paths.	AI enables dynamic, modular curricula tailored to learner profiles and goals.	Ensuring coherence and alignment across personalised learning pathways.
Learning Content	Content is often generic, text-heavy, and lacks engagement.	AI can generate interactive, multimedia-rich content adapted to learner preferences.	Maintaining quality, accessibility, and avoiding bias in AI-generated materials.
Learning Environments	Physical classrooms limit accessibility and flexibility.	AI-powered platforms offer anytime, anywhere learning opportunities.	Bridging the digital divide and ensuring equitable access to technology.
Learning Methods	One-size-fits-all approaches fail to address diverse learner needs.	AI supports adaptive learning, differentiated instruction, and learner autonomy.	Training educators to effectively integrate AI tools and pedagogical strategies.
Evaluation of Learning Outcomes	Standardised assessments may not reflect true learner progress.	AI enables real-time, formative assessments and personalised feedback.	Ensuring fairness, transparency, and ethical use of learner data.
Role of the Teacher	Teachers are viewed primarily as knowledge transmitters.	Shift towards facilitators, mentors, and co-learners supported by AI.	Redefining professional identity and upskilling in digital pedagogy.

230



Human-Machine Collaboration

Exploration and exploitation of ideas, co-learning, co-decision making, problem solving, and co-creation of knowledge

231



Top 50 Most Influential People in Tacit KM



KM Torch Award 2025

Professor Eric Tsui
Educational Development Centre & Educational Research Centre
The Hong Kong Polytechnic University
Email: eric.tsui@polyu.edu.hk
Phone: +852 2766 4650

